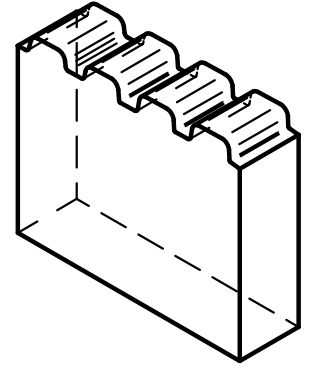
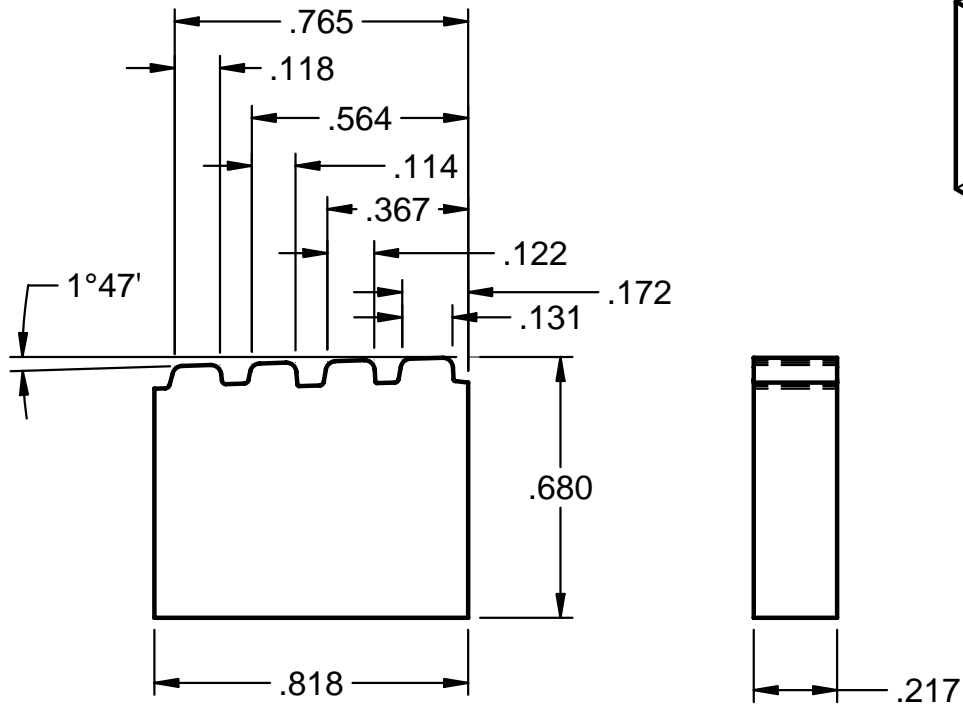


Tungste-Met

Style

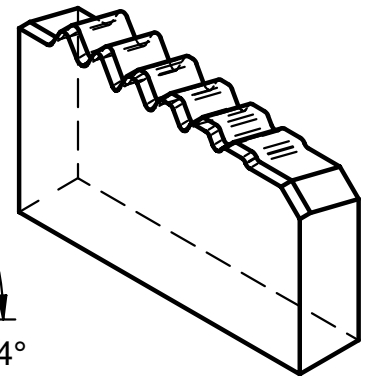
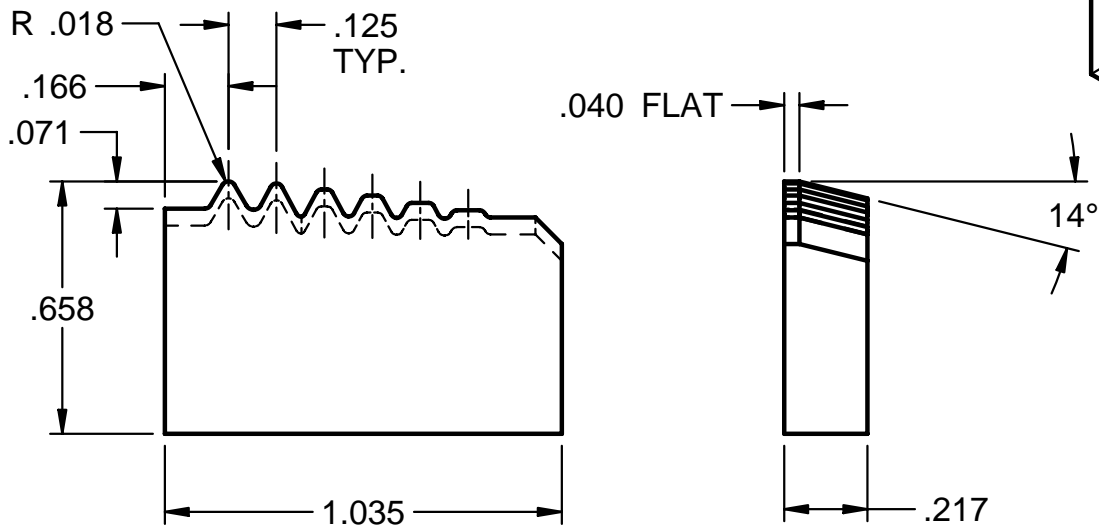
LX-1101-15-OD5BUT2.5



Tungste-Met

Style

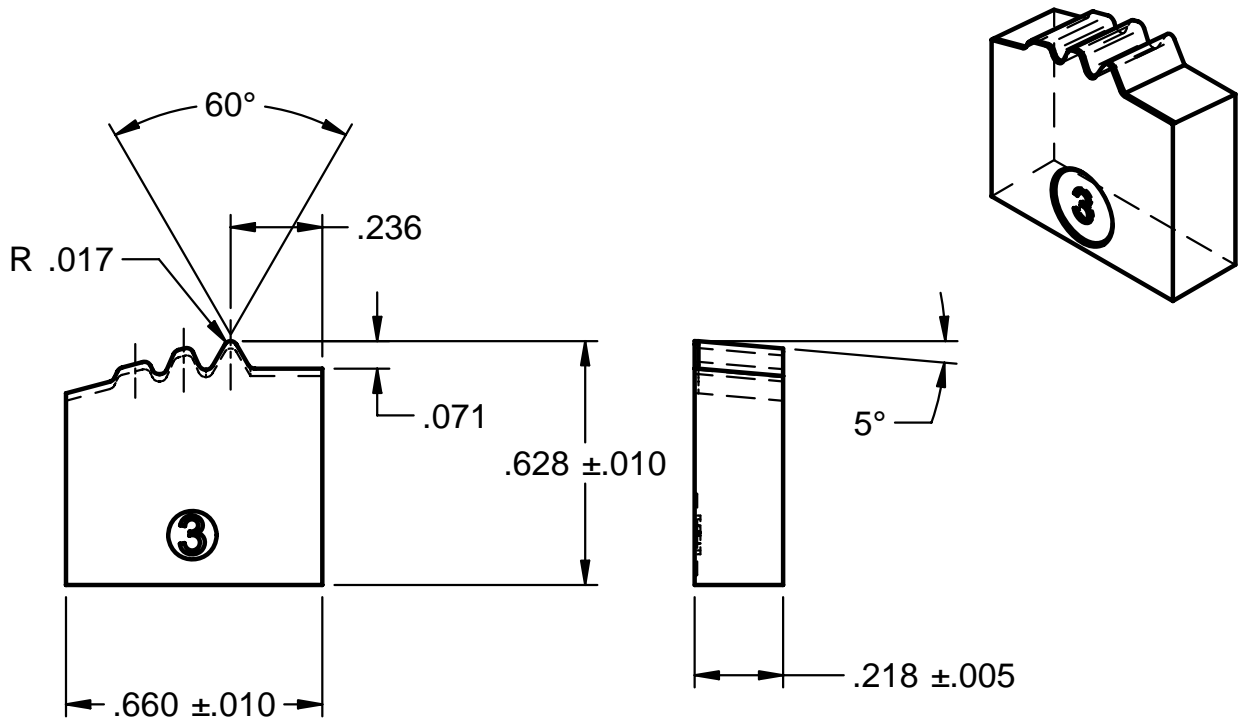
A-1727-B-8RD-INT



Tungste-Met

Style

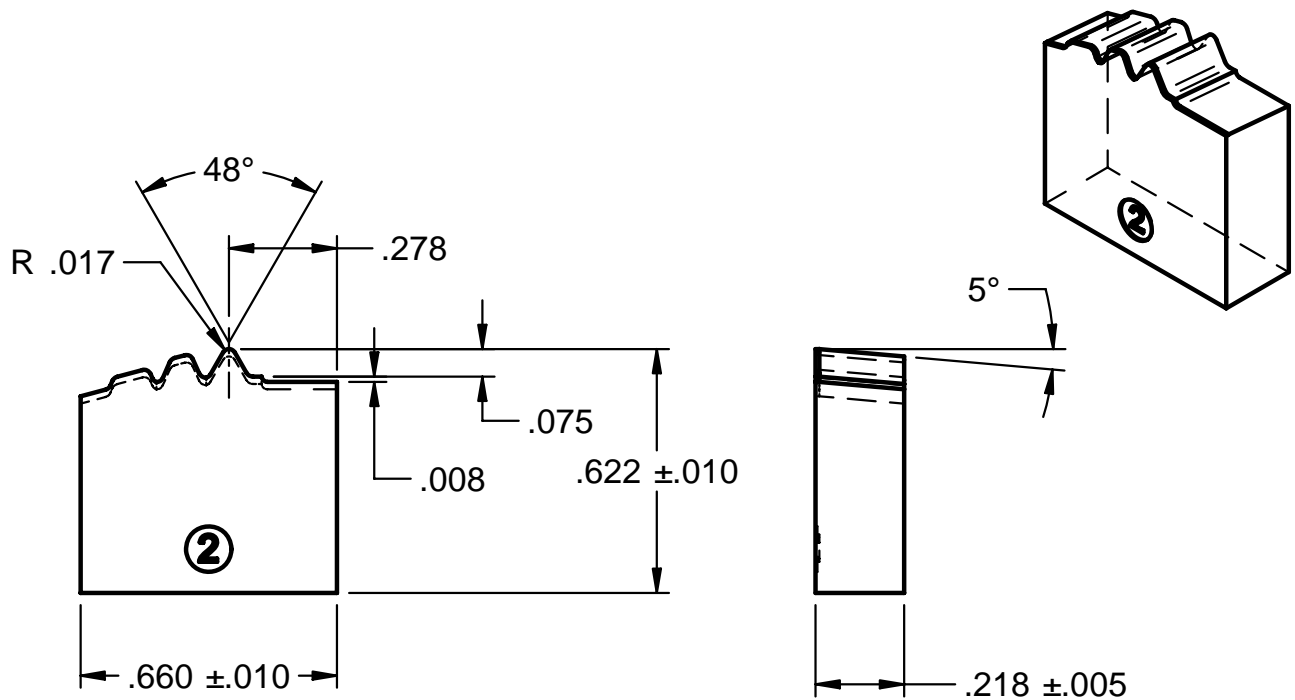
A-1931-B #3 THREAD CHASER



Tungste-Met

Style

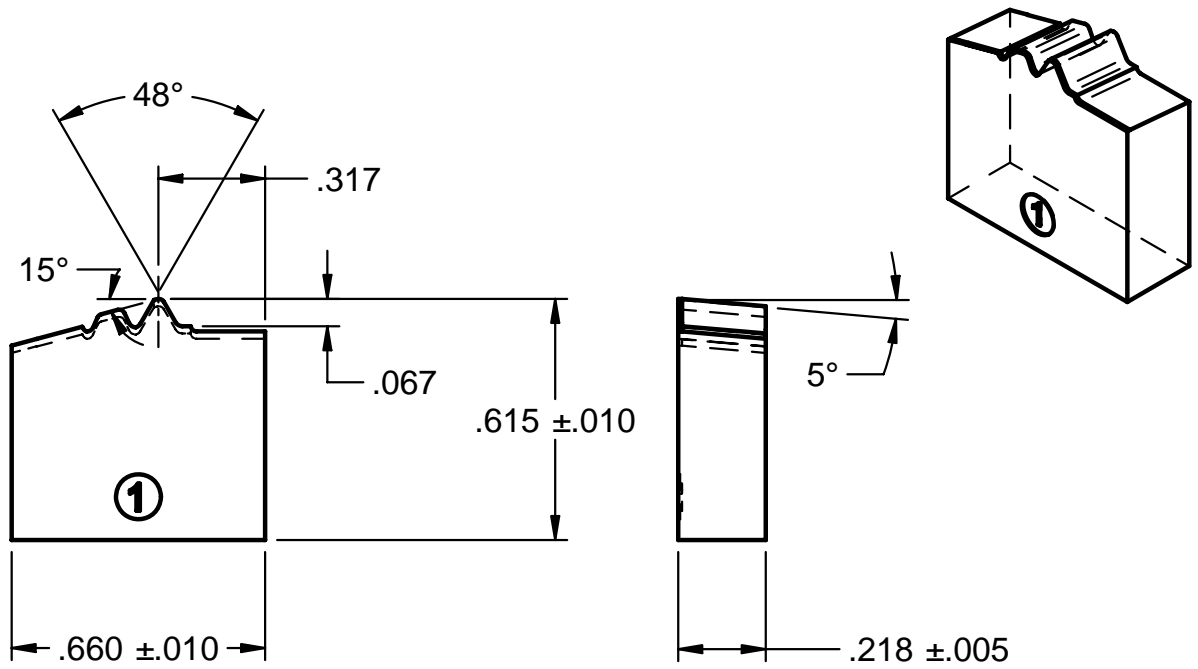
A-1930-B #2 THREAD CHASER



Tungste-Met

Style

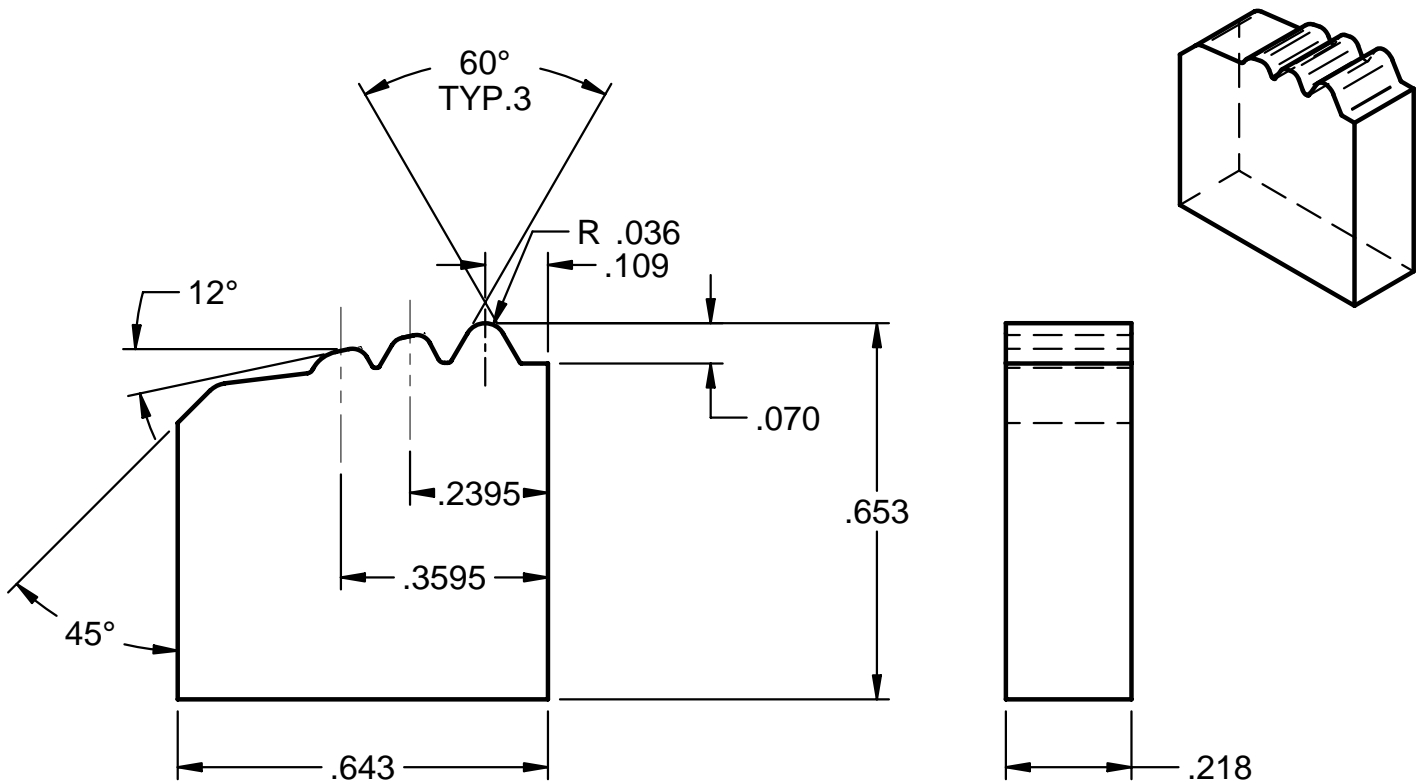
A-1929-B-1-THREAD CHASER



Tungste-Met

Style

LX-1101-14-OD8APIRD3T



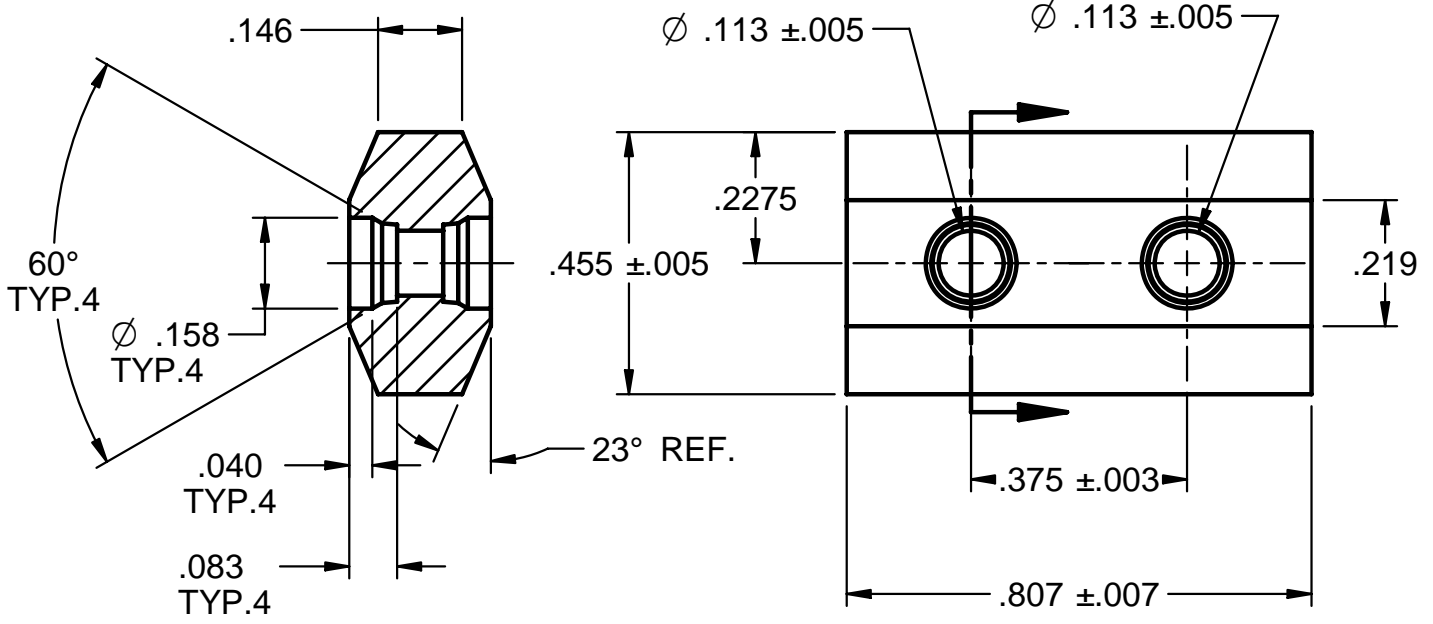
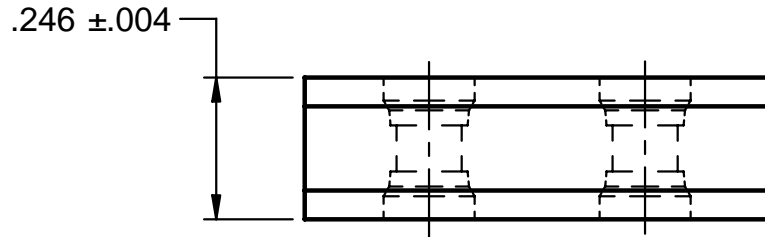
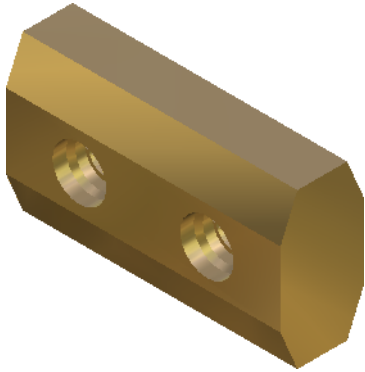
Tungste-Met

Style

LX-0549-3

TMB19/20mm

THD. MILL BLANK 19 & 20 mm



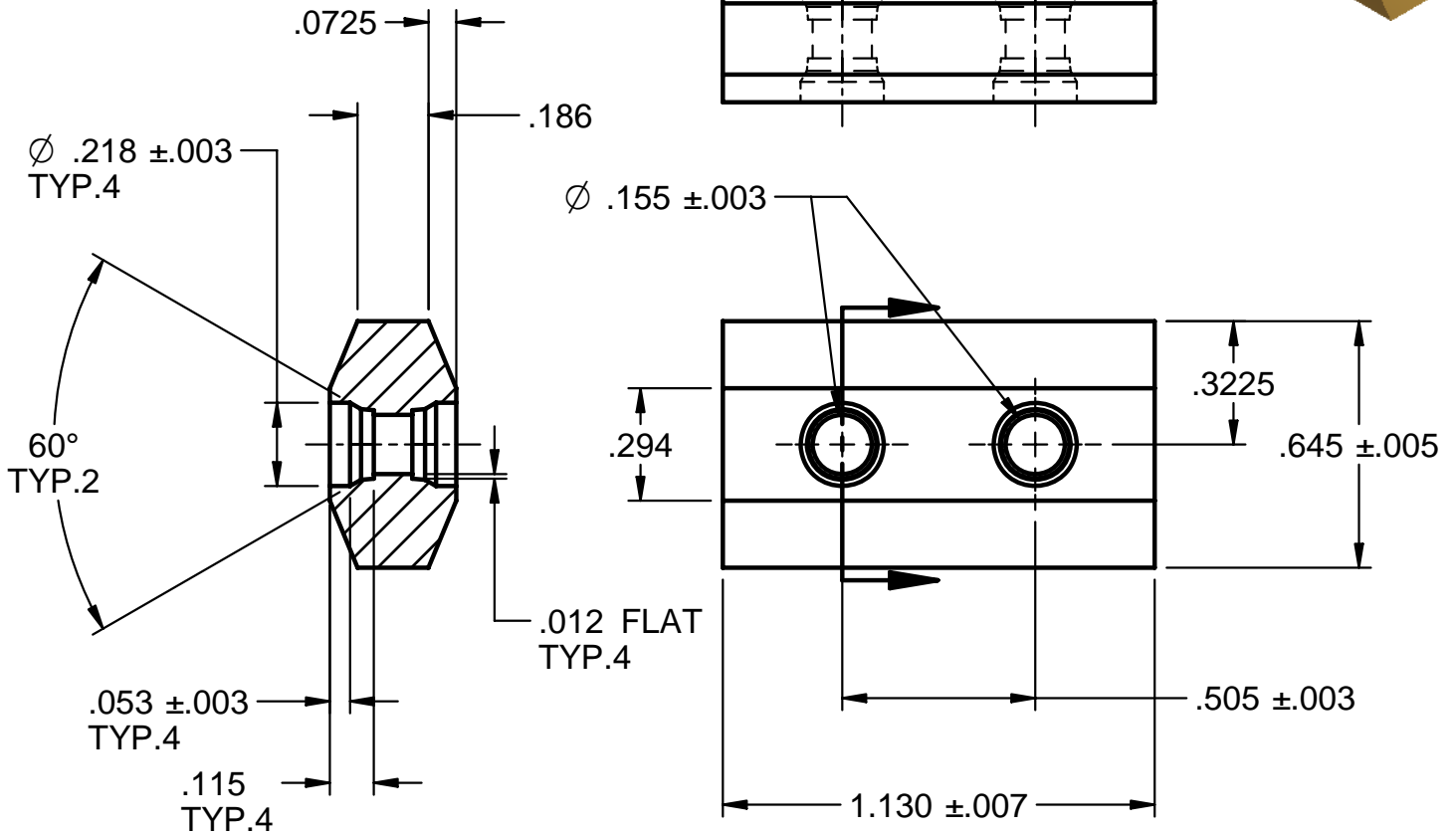
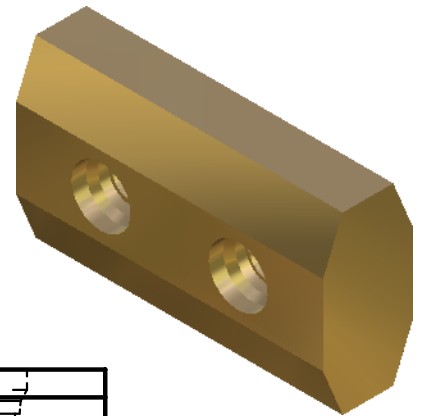
Tungste-Met

Style

LX-0549-4

TMB28mm

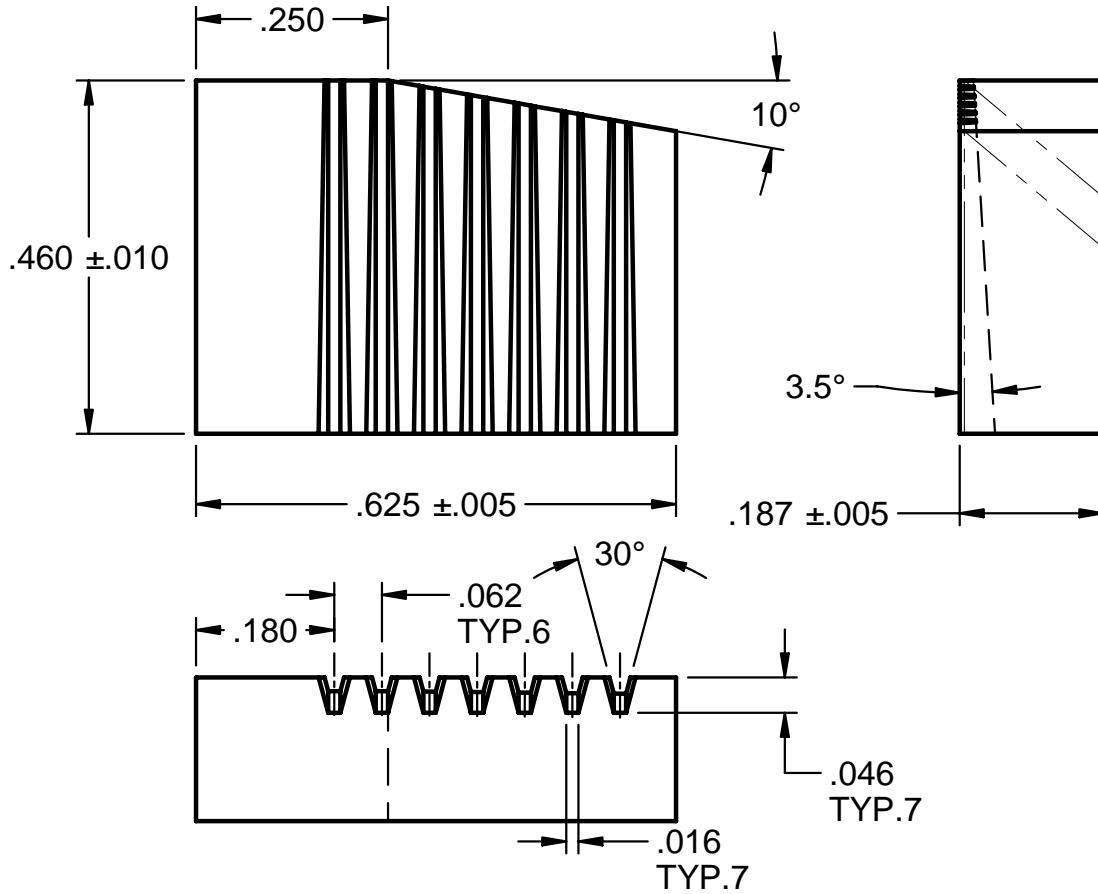
THD. MILL BLANK 28 mm



**Tungste-Met**

Style **MA-67943**

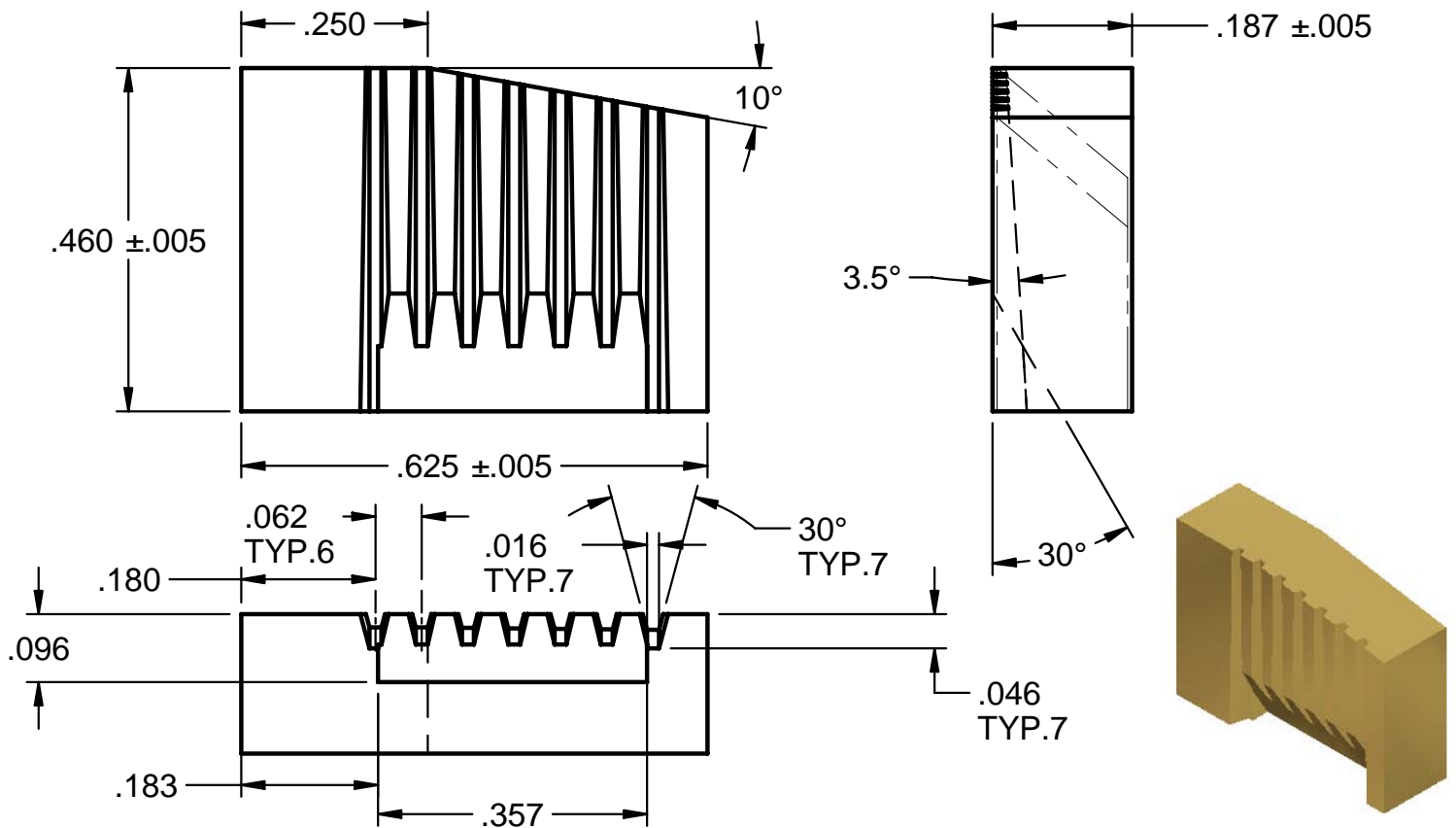
D-19252-P1  
Chipbreaker

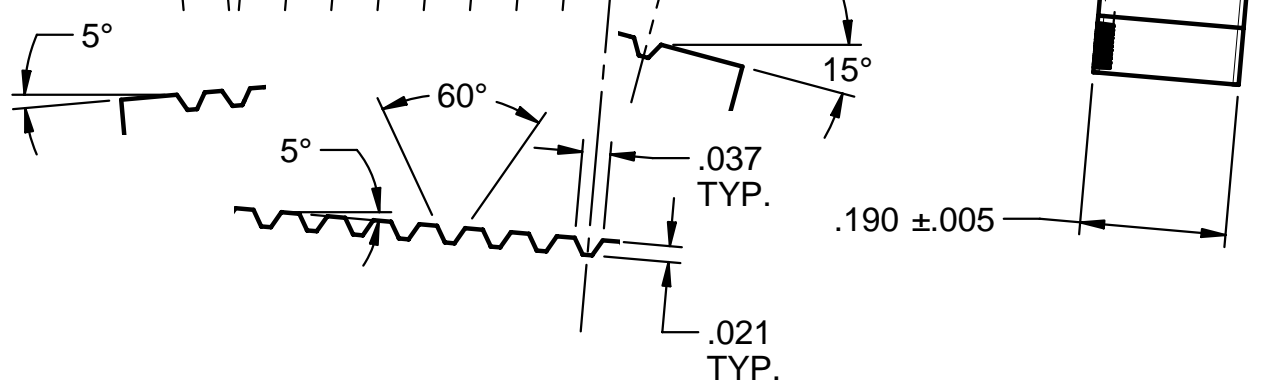
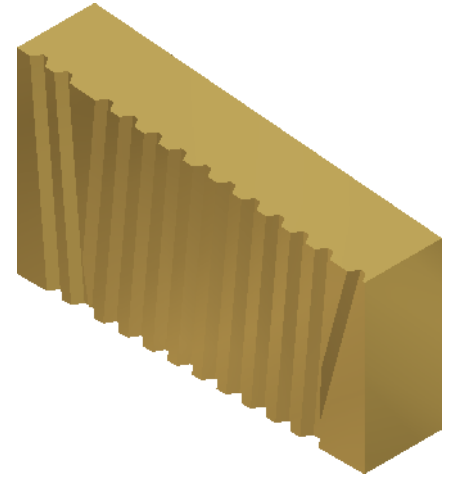
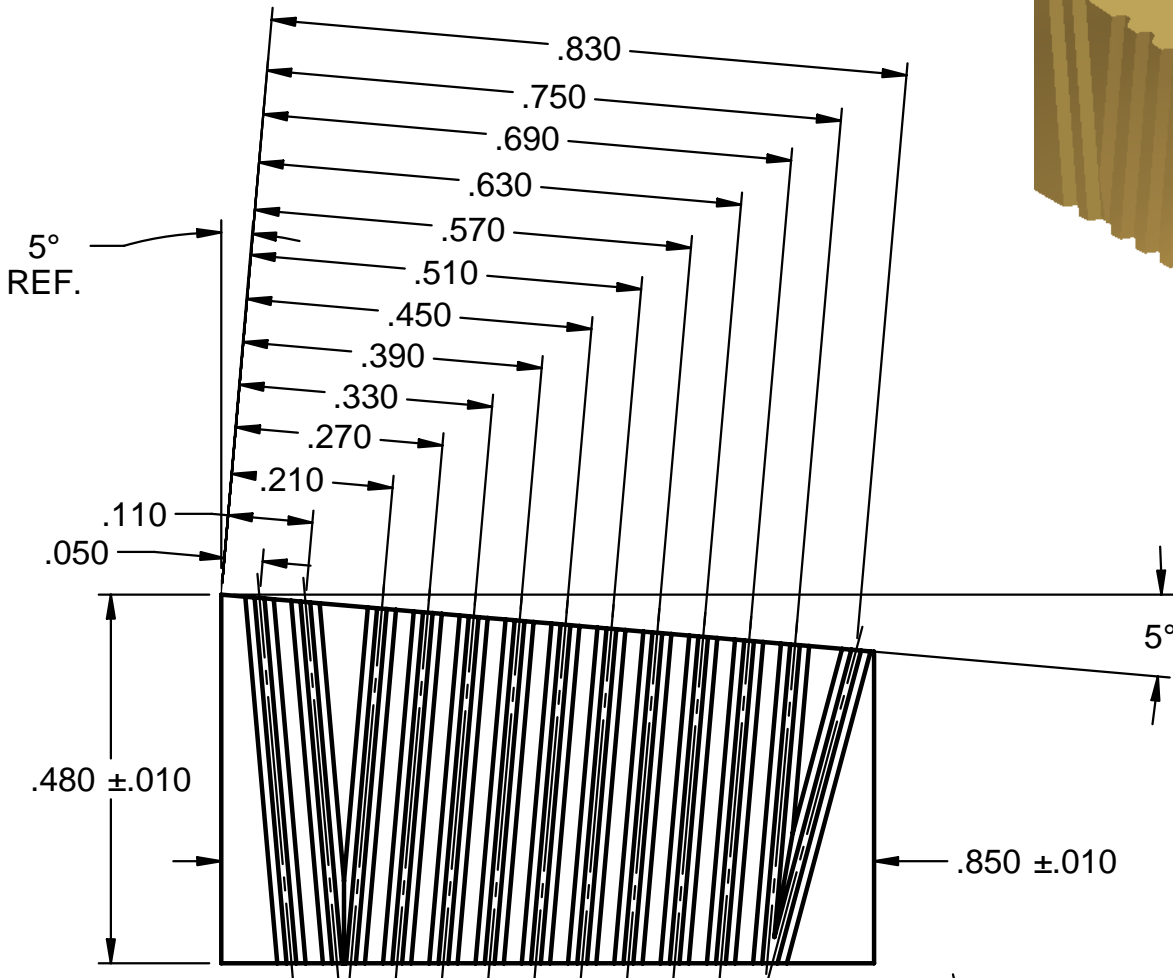


**Tungste-Met**

Style **LX-1348-1**

D-19252-P2  
Chipbreaker





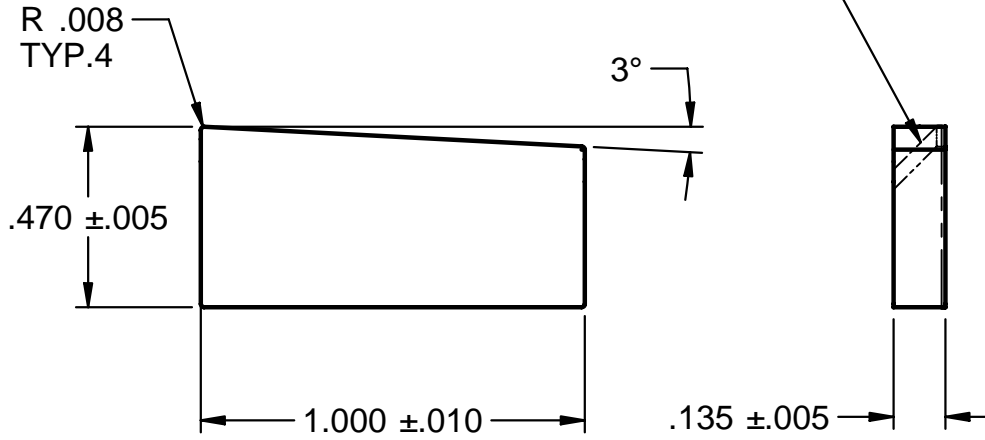
Tungste-Met

Style A-1877-A

D-19241  
Chipbreaker

Grind Stock Thickness

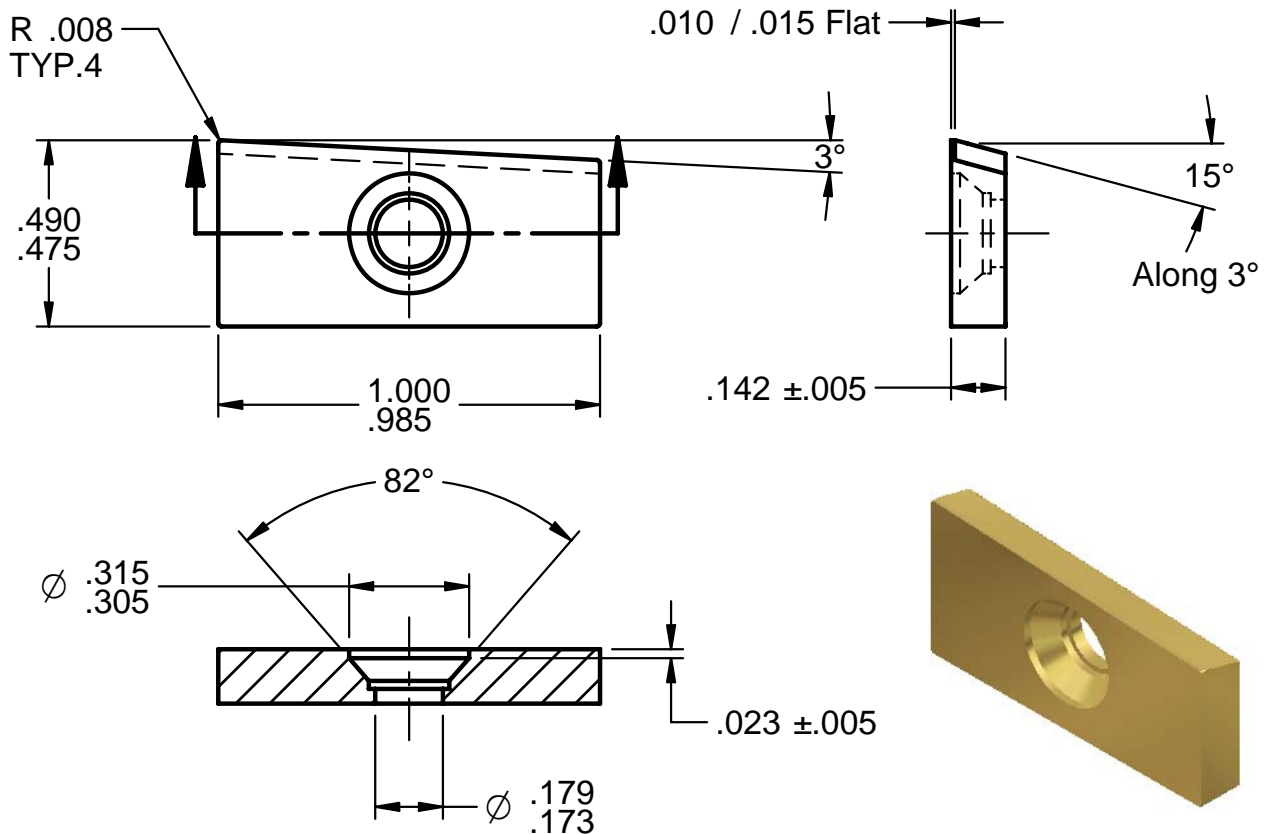
45° Clear. would need to be Ground on.



Tungste-Met

Style A-1878-A

D-07559-P1  
Shim Seat

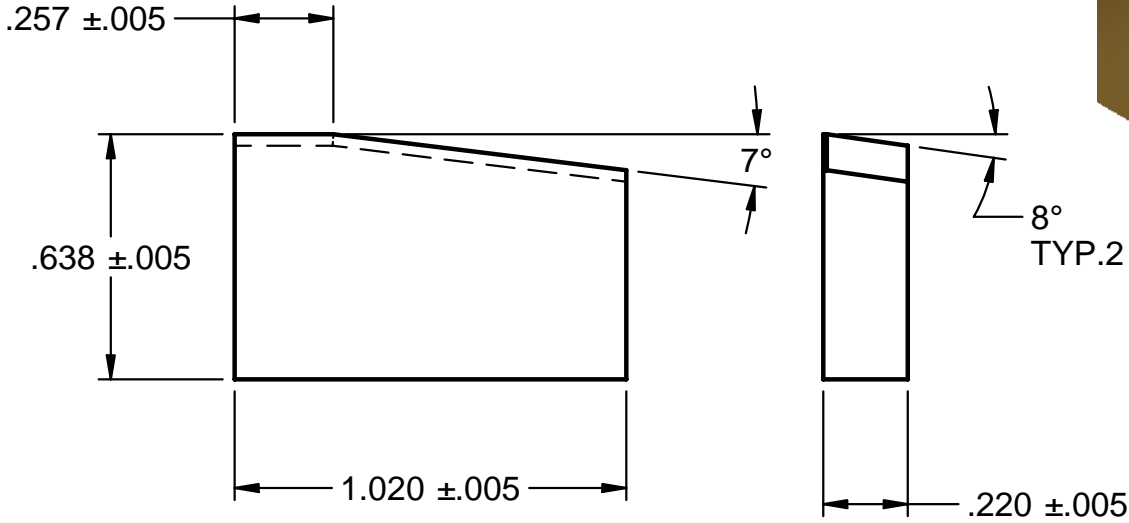




Tungste-Met

Style A-1010-B

D-07522-P1  
Chipbreaker



Tungste-Met

Style 4T8RD INT Chipbreaker

D-16670-P1

