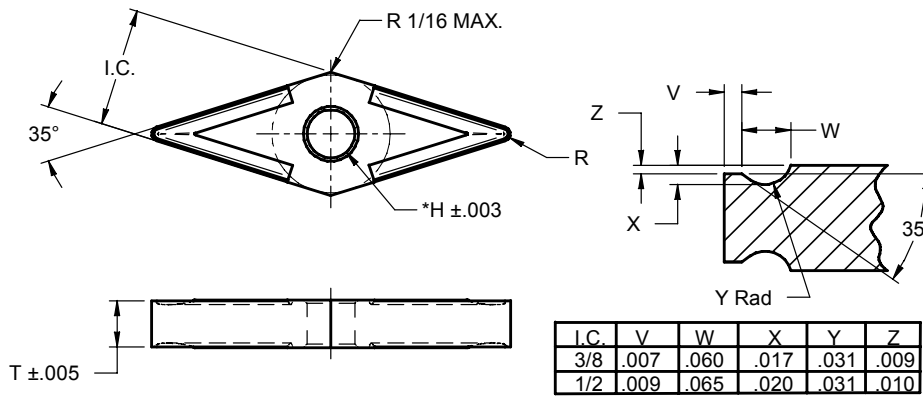


Tungste-Met

Style

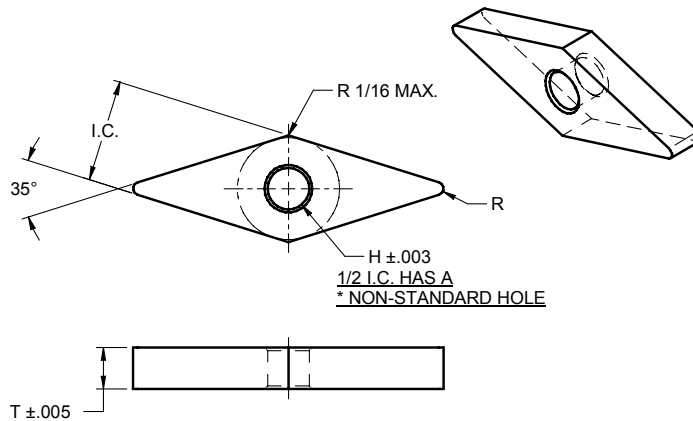
VNSG



Insert	I.C.	T	R	H	Notes
VNSG322	.375 ±.002	.143	1/32	.150	
VNSG332	.375 ±.002	.205	1/32	.150	
VNSG432	.500 ±.003	.203	1/32	.203	
*VNSG433.231H	.500 ±.003	.206	3/64	*.231	*Non-Standard
*VNSG434.231H	.500 ±.003	.206	1/16	*.231	*Non-Standard

Style

VNRA

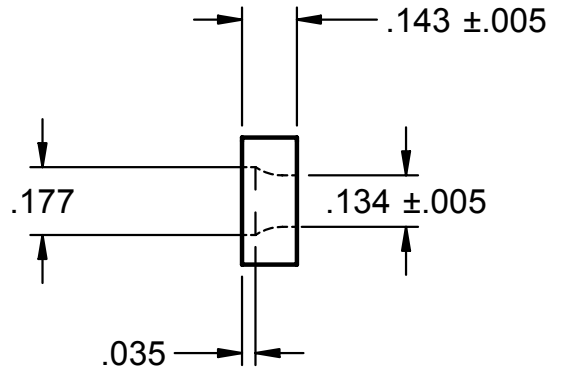
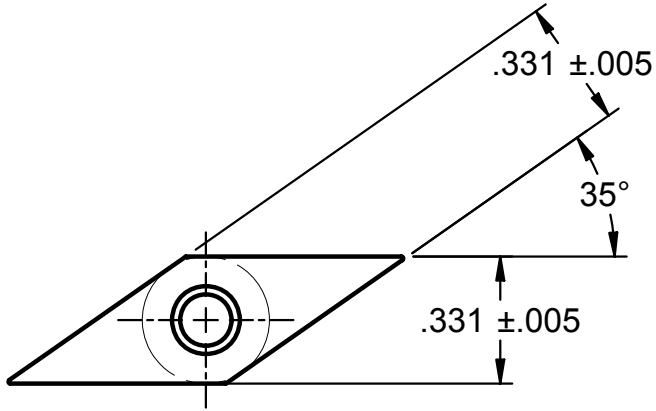
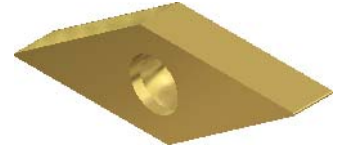


Insert	I.C.	T	R	H	Notes
VNRA331	.395 ±.005	.203	1/64	.150	
VNRA332	.395 ±.005	.203	1/32	.150	
VNRA333	.395 ±.005	.203	3/64	.150	
VNRA431	.520 ±.005	.203	1/64	.203	
*VNRA432.231H	.520 ±.005	.203	1/32	.231	*Non-Standard
VNRA441	.520 ±.005	.265	1/64	.203	
*VNRA442.231H	.520 ±.005	.265	1/32	.231	*Non-Standard

Tungste-Met

Style

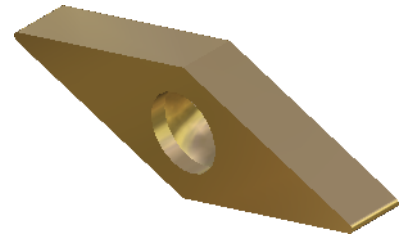
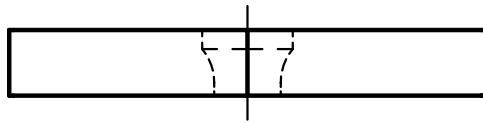
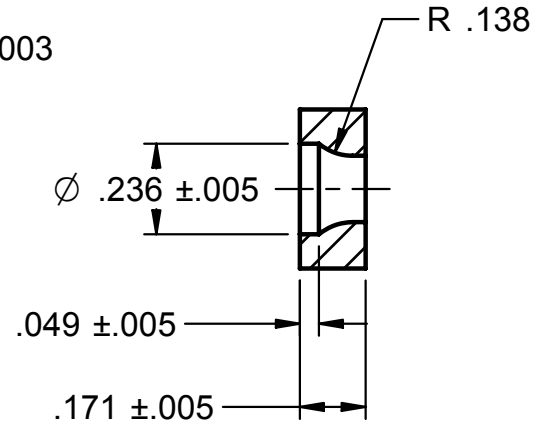
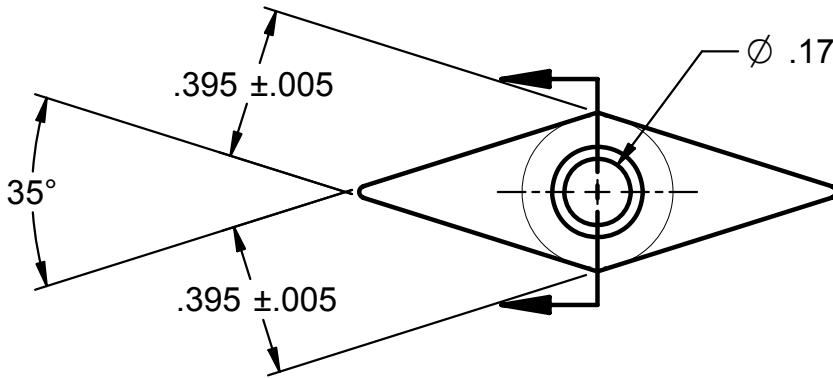
VNRW2.520



Tungste-Met

Style

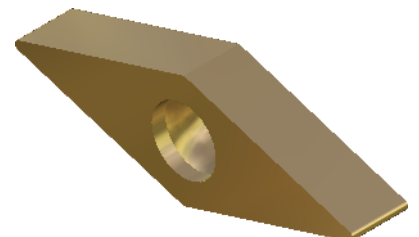
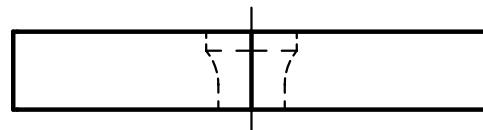
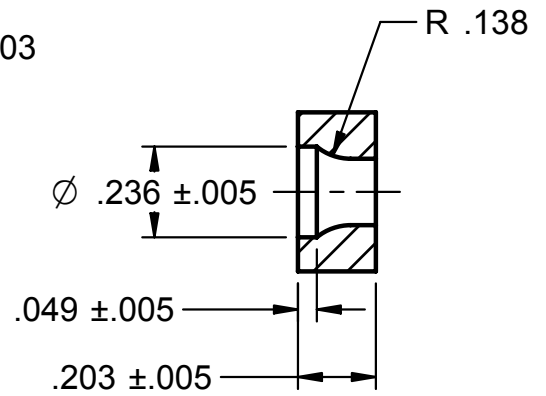
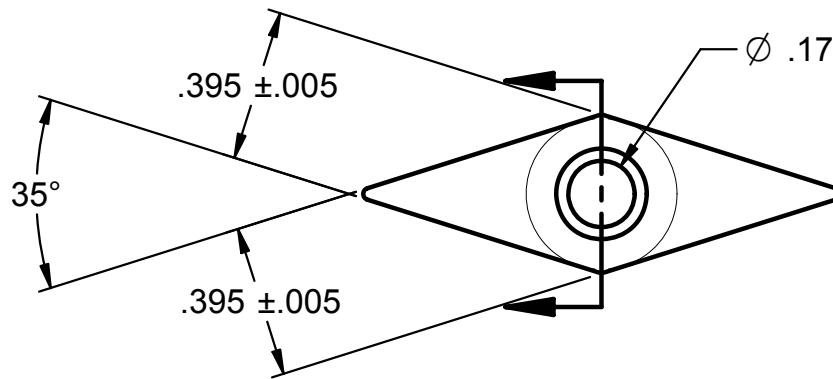
VNRW32.51



Tungste-Met

Style

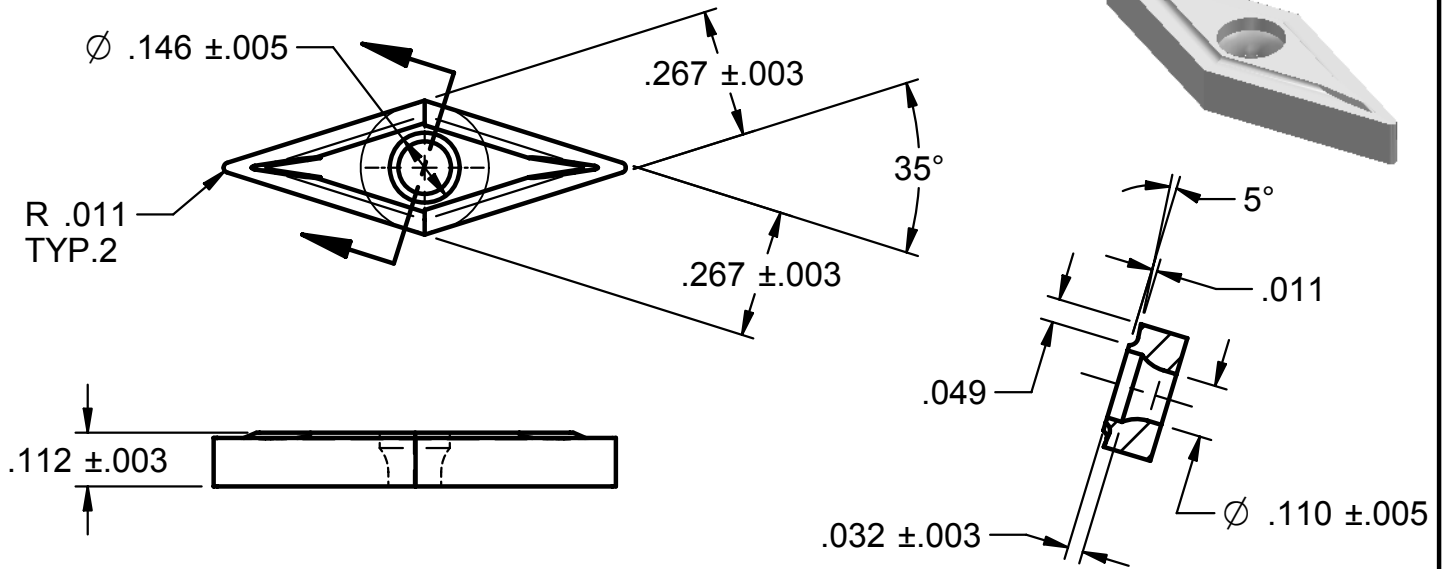
VNRW331



Tungste-Met

Style

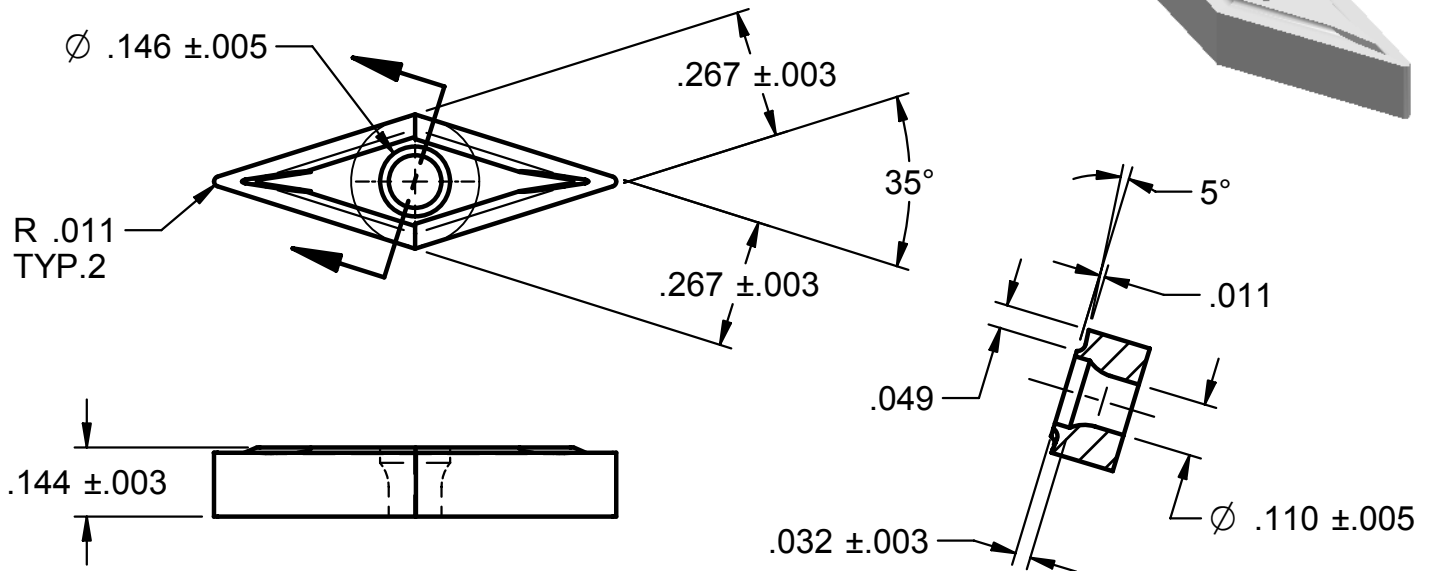
VNRT21.51-TM



Tungste-Met

Style

VNRT221-TM

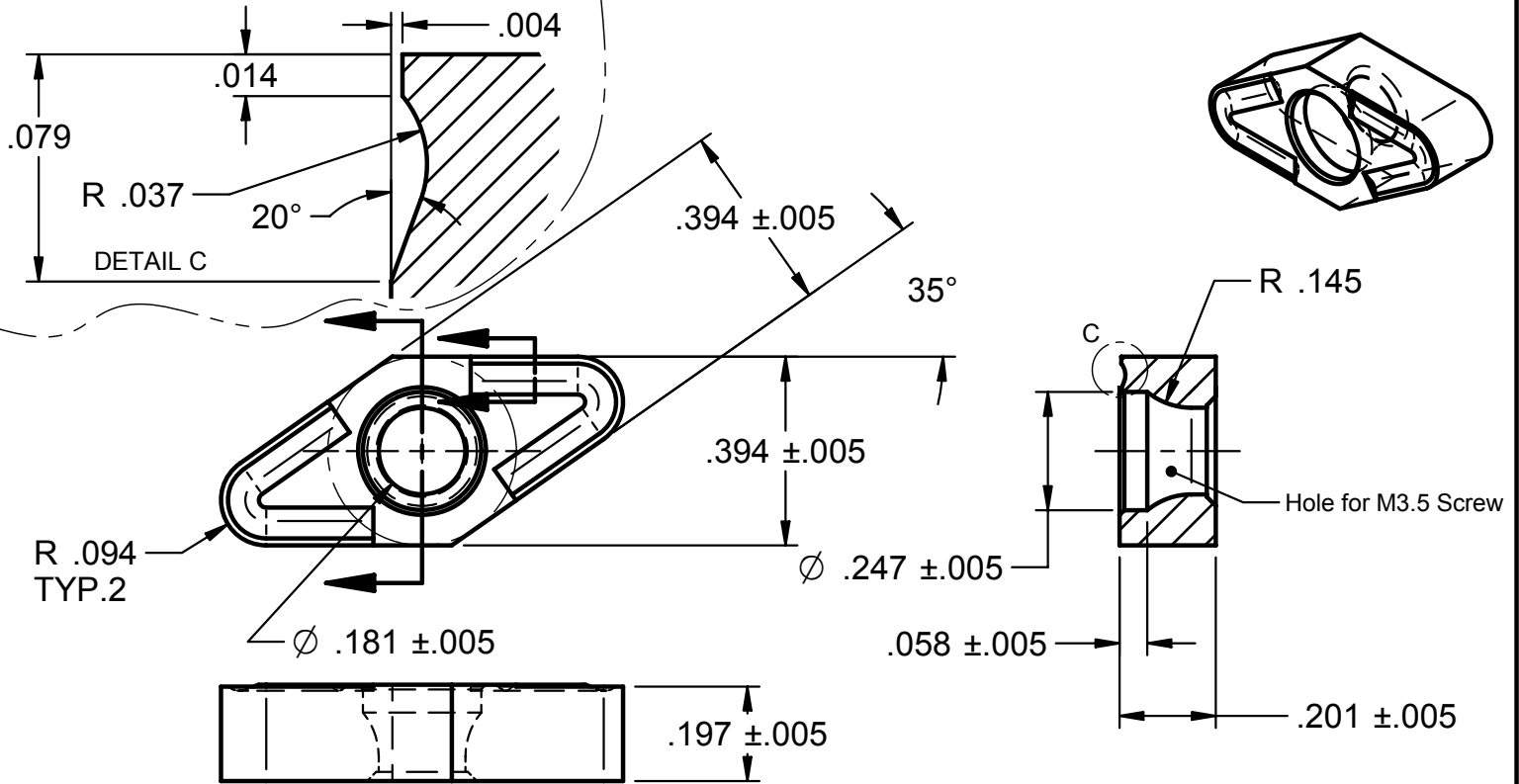


Tungste-Met

Style

LX-0985-5

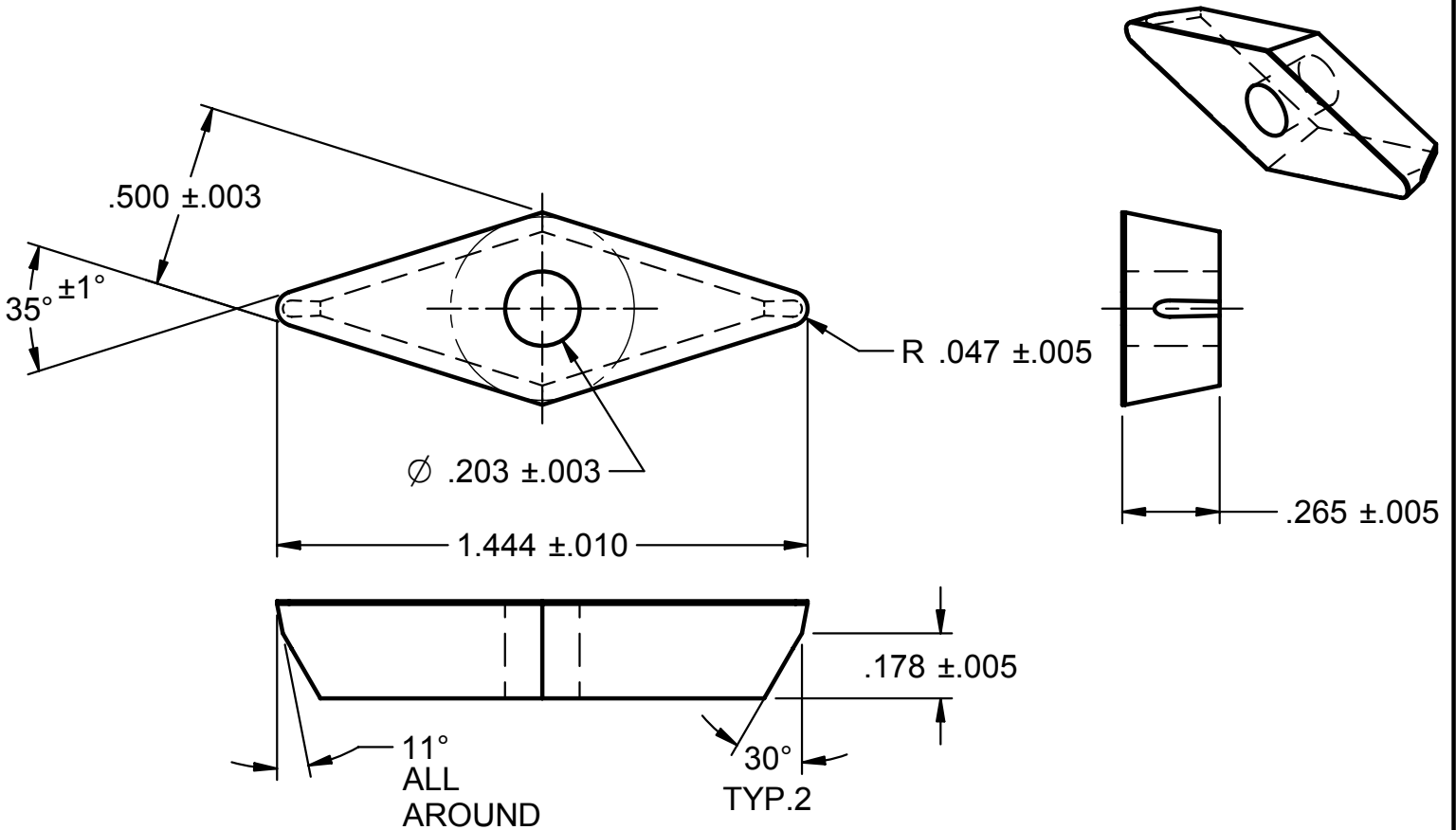
VNRT336



Tungste-Met

Style

A-2496-A (VPSA443)



Tungste-Met

Style

MA-71452

VNRP443

